

# NEWSLETTER

JANUARY 2026  
VOLUME 2026 ISSUE 1

## INSIDE THIS ISSUE

NEXT MEETING INFORMATION

MUSINGS

MEMBERSHIP INFORMATION

RESOURCE INFORMATION

ABOUT THIS NEWSLETTER

STEERING COMMITTEE MEMBERS

*Next meeting:*

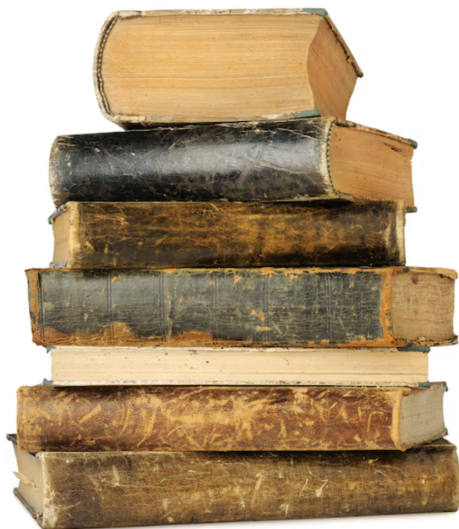
**WEDNESDAY**

**JANUARY 14TH 2026**

**6:45 PM – NEW BERLIN LIBRARY\***

**15105 West Library Lane  
New Berlin, WI 53151**

**REMINDER THAT WE  
HAVE NEW DIGS & NEW  
START TIME! 6:45pm**



## JANUARY PRESENTATIONS

- **CYBER SECURITY REFRESHER**  
*By Bill Heck*

- As noted in December's newsletter, Bill will bring us up to speed on the latest and greatest in security to help keep your devices and information safe. Bill specializes in cyber security and runs a team of experts where their sole job is to find weaknesses in corporate security and help companies build up their defenses. Bring your notebook and all your questions. I love that we do this update annually – thanks Bill!

- **MORE SECURITY CONCERNS**  
*By Sam Colon*

- Sam is back and turning the tables on cyber crooks! While criminals are busy plotting their next sneaky move, Sam will show you exactly how they try to “scooch” into your world—and how to slam the door shut. With fun, real-life examples and easy-to-use tactics, you'll learn how to outsmart the bad guys and become your savviest, most secure self. Staying safe doesn't have to be scary or boring—Sam's got more of the best tools and tips to keep you protected. Game on! **PLUS Windows 10 Options.**

## **MUSINGS & MUTTERINGS:**

Well, since we have no December meeting recap, let's highlight some traditions around the world that are diverse examples of celebrations, rituals, and customs, ranging from vibrant festivals to solemn ancestral rites; often reflecting deep cultural values, honoring ancestors, or celebrating seasons. Many global events like Christmas or New Year's connect people across continents through shared history and unique local expressions.

Find new traditions to enjoy family connections  
– don't have one – start your own 😊

### **Festivals & Celebrations**

- **Carnival (Brazil):** A massive, four-day pre-Lent festival of vibrant music, dance, and elaborate costumes.
- **Holi (India):** The "Festival of Colors," bringing joy and celebrating spring with colored powders and water.
- **Diwali (India):** The festival of lights, symbolizing victory of light over darkness, celebrated globally.
- **Obon (Japan):** A Buddhist festival where ancestors' spirits are welcomed home with lanterns and dances.
- **Timkat (Ethiopia):** Celebrates Jesus' baptism with large processions, chanting, and re-enactments. Tomb Sweeping
- **La Tomatina (Spain):** A giant, messy tomato-throwing food fight in Buñol.

### **Unique & Unusual Traditions**

- **Monkey Buffet (Thailand):** A feast of fruits and treats for monkeys in Lopburi.
- **Cheese Rolling (UK):** Participants chase a wheel of cheese down a steep hill.

- **Baby Jumping (Spain):** "El Colacho," where men dressed as the devil jump over babies.
- **Walking on Fire (China):** Rituals symbolizing courage and purification.
- **Gävle Goat (Sweden):** A giant straw Christmas goat erected annually, often targeted for burning.

### **Ancestral & Spiritual Practices**

- **Famadihana (Madagascar):** "Turning of the Bones," a ceremony to honor ancestors by rewrapping their remains.
- **Japanese Tea Ceremony:** A meditative, ritualistic way of preparing and serving matcha.

### **Holiday Traditions**

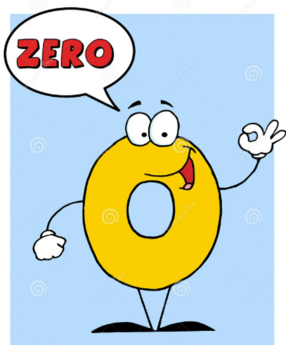
- **Yule Goat (Scandinavia):** Straw goats connected to Norse mythology, now a Christmas symbol.
- **Lucia Festival (Sweden):** Celebrates light during the darkest winter days with processions.

**These showcase humanity's diverse ways of celebrating, remembering, connecting, and expressing identity.**

### **Tomb Sweeping in China**



**DECEMBER meeting attendance**  
**YOU DIDN'T MISS A THING – THERE WAS**  
**NO DECEMBER MEETING ...**



**WE WOULD LOVE TO SEE YOU IN**  
**JANUARY – BRING A FRIEND!**

### **MEMBERSHIP UPDATE**

***Membership in MPAFUG is open to anyone***  
***interested in learning more about computer***  
***genealogy.***

**\$12** – the cost per calendar year membership that  
covers individual and family

***RENEW NOW FOR 2026 SO YOU DON'T MISS***  
***ANY MEMBER-ONLY BENEFITS 😊***

**Please send a check for \$12.00 made payable to**  
**MPAFUG or bring to the next meeting:**

**Include: name, address, email & phone number.**

**Deborah A. Bluett**

**MPAFUG Treasurer**

**PO Box 229**

**Delavan, WI 53115-0229**



### **About This Newsletter**

This newsletter is the official monthly publication of the Milwaukee PAF Users Group. All rights are reserved. No articles herein may be reproduced for profit or commercial gain without the express written consent of the Publisher or the Milwaukee PAF Users Group. Other PAF Users Groups may republish articles freely but must include credit to the authors and for the Milwaukee PAF Users Group Newsletter.

Members interested in submitting articles may email them to [bobheckmpafug@gmail.com](mailto:bobheckmpafug@gmail.com). The MPAFUG publisher will determine if an article will be used in this newsletter. Articles will be used as space permits.

NO COPYRIGHTED ARTICLES may be submitted without express permission of the author and publisher. Articles should be submitted by the 1<sup>st</sup> Wednesday to be considered for inclusion in that same month. Credit will be given for your article.

### **RESOURCES**

#### ***The Family Search Center***

9600 West Grange Avenue, Hales Corners

The Family Search Center Library hours:

**Tuesday:** 8:30AM – 3:30PM

**Wednesday:** 8:30AM – 12 Noon

**Thursday:** 8:30AM – 3:30PM and  
6:30PM – 9:00PM

**Saturday:** 10:00AM – 1:00PM

Enter at the main doors facing West Grange Avenue and follow the signs to the library.

On Thursday evenings, Bob Heck and Randy Ray are the volunteers on duty who will assist you in your research.

For some extra special help from May through September, Cheryl Heck is there to help you. Cheryl is LDS Mormon and is the expert in the Family Search website and LDS issues.

There are numerous portal systems available for free use at the center.

**Come enjoy this resource!**

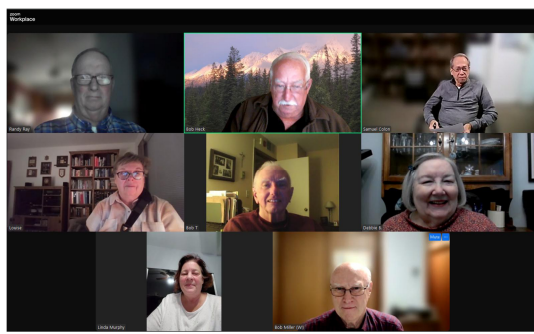


## MPAFUG KEY INFORMATION

### STEERING COMMITTEE MEMBERS

|               |              |           |
|---------------|--------------|-----------|
| Bob Heck      | Jane Orne    | Randy Ray |
| Bob Miller    | John Canapa  | Sam Colon |
| Bob           |              | Steve     |
| Tatalovich    | Linda Murphy | Gulgowski |
|               | Merilyn      |           |
| Debbie Bluett | Romani       |           |

Steering committee meetings are held via Zoom on the third Wednesday of the month except in December. The Steering Committee is an informal group of members who get together to plan topics for future meetings.



### **If you would like to make a presentation or have a suggestion for a meeting topic**

Write, call or email:  
MPAFUG c/o Bob Heck  
4910 Steeple Dr.  
Greendale, WI 53129  
414-421-7143  
[bobheckmpafug@gmail.com](mailto:bobheckmpafug@gmail.com)

### **OUR WEB PAGE**

<http://mpafug.org>

We invite you to visit our page, print a copy of this or last month's newsletter. You'll find a surname section where you can see who else is working on your family line.

**Members** of MPAFUG have access to a members-only web page which contains past newsletters and handouts from our meetings.

**\*The New Berlin Public Library does not advocate for or endorse the viewpoints of meetings or meeting room users.**

