



NEWSLETTER

MAY 2025
VOLUME 2025 ISSUE 05

INSIDE THIS ISSUE

NEXT MEETING INFORMATION

LAST MEETING RECAP

MUSINGS- MOM'S GLOBALLY

VOLUNTEERS NEEDED - SHOW & TELL

MEMBERSHIP INFORMATION

RESOURCE INFORMATION

ABOUT THIS NEWSLETTER

STEERING COMMITTEE MEMBERS

Next meeting:
WEDNESDAY
MAY 14TH 2025

7:00 PM – New Berlin Ale House
16000 West Cleveland Avenue
New Berlin, WI 52151



*Just like your garden – come see what's
blooming at the next meeting*



MAY PRESENTATIONS

• **NATIONAL ARCHIVES ~ ST LOUIS MILITARY RECORDS**

✓ **By Randy Ray**

- Randy will discuss what is available specific to the St. Louis location.
- ***Some of the items they house:***
- Official Military Personnel Files (OMPFs)
- Official Personnel Folders (OPF)
- Civilian Conservation Corps (CCC), Enrollee Records
- Selective Service Records
- Deceased Veteran's Claim Files
- Individual Deceased Personnel Files
- Persons of Exceptional Prominence

• **CIVIL WAR RESEARCH ONLINE**

✓ **By Bob Heck**

- Especially helpful when your research brings you to the question of "think a relative may have served".
- Uncover what different markings mean
- Bob will share how in depth some of these documents get with details from 250 pages of his relative's records:
 - Service records
 - Medical records
 - Government errors (they removed him in error)
 - Battle engagements
 - And more!

APRIL MEETING RECAP:

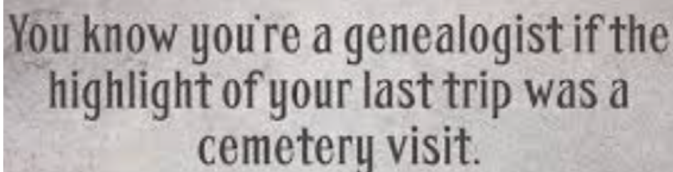
- Come a bit early and enjoy the pre-meeting videos playing now!

- **GENEALOGY 101 – BACK TO BASICS** by Randy Ray

- Randy brought us back to some of the developed tools to use in starting or continuing your research journey. Here are some tips.
- Family Search-Randy uses daily and his #1 go-to
- Read your records at least twice. Confirm what you see to what you know.
- On your tree-women should always be listed using maiden name.
- Use google translate if needed
- For fun-google “funny stuff on ancestry”.
- Recommended resolution for saving pics:300 DPI or 600-1200 for small pic looking to enlarge
- BMP=non-compressed for file
- PDF=will compress
- US Gen Web-old but still viable
- Find-A-Grave: many using to add trees by linking (considered a secondary source)
- Going to the cemetery = ask for a burial card. Often lists cause of death.
- Lots more incredible information-watch again! Great job Randy – thank you

- **BOOK RESEARCH ON THE INTERNET** by Bob Heck

- Another hearty portion of resources was covered by Bob. Covered 10 covering both free and paid sites to assist in your research journey.
- **Free:**
- **Books.google.com** - has millions of books that may contain connections to your family's history.
- **Archive.Org** – histories by County
- **Hathitrust.com** – digital library
- **DPLA (Digital Public Library of America)** – Bob's parents interviews can be found here! Millions of records from class pics to family photos and more
- **Family Search.com** – yes that one
- **WorldCat.org** – ethnic genealogy with family bibles, newspapers, cemetery archives and more
- **Paid sites:**
- many available for free at libraries and at the Family Search Center. Some info may be restricted for various reasons but much available.
- **Ancestry.com**
- **FindMyPast.com**
- **MyHeritage.com**
- **AmericanAncestors.com**
- Fantastic amount of inspiring information – please watch again and check out the handouts. Super job Bob!



You know you're a genealogist if the highlight of your last trip was a cemetery visit.

MUSINGS & MUTTERINGS:

May brings us to the designated day to honor all our Mother's do for us. To me, it is a day to think of and thank all the influential women in my lifetime that shaped who I became. Grandmothers, Aunts, Cousins, Sisters, Nieces, and the Daughter's that made us Mom. Although the day to honor is different around the world, here are some varieties of celebrating Mom:

- ♥ If Mom is gone – gather family and retell cherished stories while making some favorite dishes she may have made to keep the memories alive.
- ♥ In India they honor the Mother by washing her feet
- ♥ Australia - Some outings that are popular include going to the botanical gardens or zoo, organizing walks for Breast Cancer Awareness, and Mother's Day poems being performed on the radio, TV, or in parks!
- ♥ Mexico makes it a big event – hiring bands, cooking lots of food for family and friends, special masses in Church and parades through the Community.
- ♥ Many countries choose carnations as the flower of choice to give
- ♥ Special Brunch - give Mom a cooking break and time to enjoy her family – bonus - no cleanup
- ♥ ***Thank the mom's you meet everywhere 😊***

April meeting attendance



Weather is getting fabulous - come to the meeting and bring someone along!

We'd love to see you.



Currently opening the floor for our Member show & tell.

- OCTOBER Mtg will be time!
- **6 people needed** for 10-15 minute presentation each
- Bob can help you in putting together PowerPoint presentation of your topic
- Where you have been in your research? What did you find there?
- Bring that special feeling to share with the group at show & tell mtg.
- Contact Bob to sign up for a slot
- Take this great opportunity to inspire others in their journey with your treasures you may have come across.
- **All are welcome!**

MEMBERSHIP UPDATE

201 – the number of families currently enrolled memberships.

\$12 – the cost per calendar year membership that covers individual and family

Membership in MPAFUG is open to anyone interested in learning more about computer genealogy.

Please send a check for \$12.00 made payable to MPAFUG to or bring to the next meeting:

**Deborah A. Bluett
MPAFUG Treasurer
PO Box 229
Delavan, WI 53115-0229**

Please include with your check, your Name, Mailing Address, email Address and Phone Number.

RESOURCES

The Family Search Center

9600 West Grange Avenue, Hales Corners

The Family Search Center Library hours:

Tuesday: 8:30AM – 3:30PM

Wednesday: 8:30AM – 12 Noon

Thursday: 8:30AM – 3:30PM and
6:30PM – 9:00PM

Saturday: 10:00AM – 1:00PM

Enter at the main doors facing West Grange Avenue and follow the signs to the library.

On Thursday evenings, Bob Heck and Randy Ray are the volunteers on duty who will assist you in your research.

For some extra special help from May through September, Cheryl Heck is there to help you. Cheryl is LDS Mormon and is the expert in the Family Search website and LDS issues.

There are numerous portal systems available for free use at the center.

Come enjoy this resource!

MPAFUG KEY INFORMATION

About This Newsletter

This newsletter is the official monthly publication of the Milwaukee PAF Users Group. All rights are reserved. No articles herein may be reproduced for profit or commercial gain without the express written consent of the Publisher or the Milwaukee PAF Users Group. Other PAF Users Groups may republish articles freely but must include credit to the authors and *for* the Milwaukee PAF Users Group Newsletter.

Members interested in submitting articles may email them to bobheckmpafug@gmail.com. The MPAFUG publisher will determine if an article will be used in this newsletter. Articles will be used as space permits.

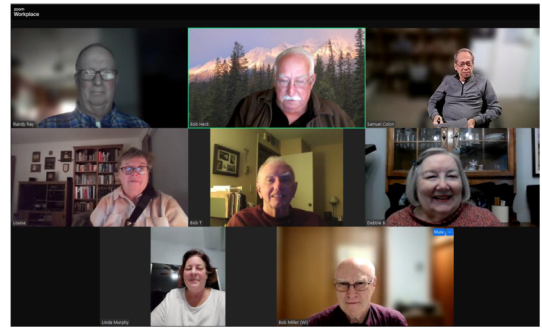
NO COPYRIGHTED ARTICLES may be submitted without express permission of the author and publisher. Articles should be submitted by the 1st Wednesday to be considered for inclusion in that same month. Credit will be given for your article.

STEERING COMMITTEE MEMBERS

| | | |
|---------------|--------------|-----------|
| Bob Heck | Jane Orne | Randy Ray |
| Bob Miller | John Canapa | Sam Colon |
| Bob | | Steve |
| Tatalovich | Linda Murphy | Gulgowski |
| Debbie Bluett | Louise Stack | |

Steering committee meetings are held via Zoom on the third Wednesday of the month except in December. The Steering Committee is an informal group of members who get together to plan topics for future meetings.

All MPAFUG members are welcome to attend.



Questions about MPAFUG?

If you would like to make a presentation or have a suggestion for a meeting topic

Write, call or email:

MPAFUG c/o Bob Heck

4910 Steeple Dr.

Greendale, WI 53129

414-421-7143

bobheckmpafug@gmail.com

OUR WEB PAGE

<http://mpafug.org>

We invite you to visit our page, print a copy of this or last month's newsletter. You'll find a surname section where you can see who else is working on your family line.

Members of MPAFUG have access to a members-only web page which contains past newsletters and handouts from our meetings.