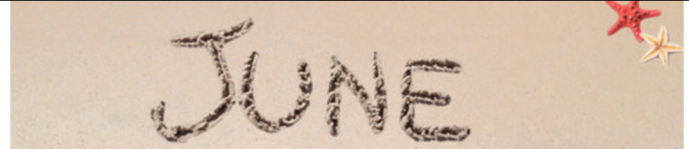




# NEWSLETTER



JUNE 2025  
VOLUME 2025 ISSUE 06



## INSIDE THIS ISSUE

NEXT MEETING INFORMATION

LAST MEETING RECAP

MUSINGS- DAD'S & THEIR JOKES

VOLUNTEERS NEEDED - SHOW & TELL

MEMBERSHIP INFORMATION

RESOURCE INFORMATION

ABOUT THIS NEWSLETTER

STEERING COMMITTEE MEMBERS



**Next meeting:**  
**WEDNESDAY**  
**JUNE 11<sup>TH</sup> 2025**

**7:00 PM – New Berlin Ale House**  
**16000 West Cleveland Avenue**  
**New Berlin, WI 52151**



**Time to step out of the farm – bug someone**  
**you enjoy to join you at the next meeting!**



## PRESENTATIONS

- **RESEARCHING CLERGY IN YOUR FAMILY TREE** *By Linda Murphy*
  - Linda will share some of the sources to try and connect when you may know of a clergy person in your family tree
  - Covering steps in her own family knowledge and where it led her
  - Fully utilizing obituary information is different in people of calling
    - Standard survivor information
    - Service timeline
    - Retirement bliss
  - How it is more than just factual additions – it often lends itself to filling in the story of who they were and the impact they made.
- **DEMO EDITING VIDEOS-ADD SOUND-SPLIT-JOIN** *By Bob Heck*
  - Bob has different options to give special touches to your videos.
  - These tips in the demonstration will also show ways to preserve the best parts of videos for easiest storage
    - Adding sound to videos
    - How to split videos
    - How to join videos
  - Knowing how these work can allow you to digitally capture and preserve the best parts of your video collections
  - What a great skill to truly polish up your video treasures – can't wait!

## MAY MEETING RECAP:

### **NATIONAL ARCHIVES ~ ST LOUIS MILITARY RECORDS**

✓ **By Randy Ray**

- Randy covered what can be discovered at the St. Louis location specifically for military records and how best to request them.
  - ***Some of the items they house:***
  - Official Military Personnel Files (OMPFs)
  - Official Personnel Folders (OPF)
  - Civilian Conservation Corps (CCC), Enrollee Records
  - Selective Service Records
  - Deceased Veteran's Claim Files
  - Individual Deceased Personnel Files
  - Persons of Exceptional Prominence
- Use archives.gov to request standard form 180 (SF-180)
- Covered CCC record requests, medical records, other military sites and forms to use.
- Coast Guard and Merchant Marine portals
  - Got his Father's information returning just two weeks after request. It covered the trips while in service and more
- Also suggested to check Cruise Books for Navy fellow service men and the trips and stations along the journey
- Reunion websites is another great way to see family service members and where they toured and who they served along side
- Randy started to delve into the world of AI while doing some of the research.
  - Chat GPT translated some documents giving a fairly accurate summary of some large amount of information. (Free for about 4 or 5 questions per day)
  - Gemini AI also an up-and-coming AI assistant – offered by Google (free)
- Tons of great links in his handout – please keep for reference!
- Great job Randy – thank you!

### **CIVIL WAR RESEARCH ONLINE**

✓ **By Bob Heck**

- Bob helped us with tools for when we have the question of “I think a relative may have served”.
  - Uncovered what different markings mean
    - Tombstones
    - Obituaries
    - Biographical sketches
    - US Census 1890 & 1910
      - ✓ 1890 had much lost to the fire but Veteran records survived!
      - ✓ 1910 had a section to denote Union or Confederacy or neither
    - Internet searches
    - Old photos – pay attention to ribbons or markers worn
  - Veteran's organization GAR
    - Grand Army of the Republic
    - Certain military divisions for Union served between April 12 1861 and April 9 1865
  - Bob shared how in depth some of these documents get with details from 250 pages of his relative's records:
    - Service records
    - Medical records
    - Government errors (they removed him in error)
    - Battle engagements
    - And more!
- Pension records yield the most genealogical data
  - Can be requested by NATF Form 85
  - 1 form per soldier
- Records are not cheap but worth it
- Much like Randy's handout – Bob has many site links and form information to keep on hand for reference when hitting the military inquiries.
- Fabulous information and super job Bob – thank you!

*We'd love to see you.*



## **MUSINGS & MUTTERINGS:**

June brings us into barbecue season, baseball, softball, yelling at the ump season. It breaks out gardening in full swing and washing the dog, car and sometimes your neighbor's windows season. It has us pause to take a day to support good ol' Dad on Father's day.

- ♥ Many times, if you are fortunate enough to have a great Dad – we will find some time to reflect. Take some moments to realize all the things Dad taught us and we in turn have passed on to the next generation.
- ♥ For many it was how to ride a bike, fix the car, get through tough classes and get along with siblings.
- ♥ Deeper lessons were respect, dignity, integrity, being a helpful human.
- ♥ For some it was keeping your cool when packing a car for the family road trip, camping tricks, scouts and how to stand up for yourself and protect your little brother or sister.
- ♥ Master of the grill – what were your favorite Dad meals? Movies? Stories?
- ♥ Can't get past the urge to repeat your favorite Dad jokes?
  - How do you know when a joke is a Dad joke?
  - (GROAN) - (When it becomes APPARENT)
- ♥ ***Thank the Dad's you meet everywhere 😊***

**MAY meeting attendance**

**33**

***Weather is getting fabulous - come to the meeting and bring someone along!***

***Currently opening the floor for our Member show & tell.***

- **OCTOBER Mtg will be time!**
- **6 people needed for 10-15 minute presentation each**
- **Bob can help you in putting together PowerPoint presentation of your topic**
- **Where you have been in your research? What did you find there?**
- **Bring that special feeling to share with the group at show & tell mtg.**
- **Contact Bob to sign up for a slot**
- **Take this great opportunity to inspire others in their journey with your treasures you may have come across.**
- **All are welcome!**

**MEMBERSHIP UPDATE**  
***WELCOME NEW STEERING COMMITTEE MEMBER MERILYN ROMANI!***



**201** – the number of families currently enrolled memberships.

**\$12** – the cost per calendar year membership that covers individual and family  
**Membership in MPAFUG is open to anyone interested in learning more about computer genealogy.**

**Please send a check for \$12.00 made payable to MPAFUG to or bring to the next meeting:**

**Deborah A. Bluett  
MPAFUG Treasurer  
PO Box 229  
Delavan, WI 53115-0229**

**Please include with your check, your Name,**

**Mailing Address, email Address and Phone Number.**

## **RESOURCES**

### ***The Family Search Center***

**9600 West Grange Avenue, Hales Corners**

The Family Search Center Library hours:

**Tuesday:** 8:30AM – 3:30PM

**Wednesday:** 8:30AM – 12 Noon

**Thursday:** 8:30AM – 3:30PM and  
6:30PM – 9:00PM

**Saturday:** 10:00AM – 1:00PM

Enter at the main doors facing West Grange Avenue and follow the signs to the library.

On Thursday evenings, Bob Heck and Randy Ray are the volunteers on duty who will assist you in your research.

For some extra special help from May through September, Cheryl Heck is there to help you. Cheryl is LDS Mormon and is the expert in the Family Search website and LDS issues.

There are numerous portal systems available for free use at the center.

**Come enjoy this resource!**

## **MPAFUG KEY INFORMATION**

### **About This Newsletter**

This newsletter is the official monthly publication of the Milwaukee PAF Users Group. All rights are reserved. No articles herein may be reproduced for profit or commercial gain without the express written consent of the Publisher or the Milwaukee PAF Users Group. Other PAF Users Groups may republish articles freely but must include credit to the authors and *for* the Milwaukee PAF Users Group Newsletter.

Members interested in submitting articles may email them to [bobheckmpafug@gmail.com](mailto:bobheckmpafug@gmail.com). The MPAFUG publisher will determine if an article will be used in this newsletter. Articles will be used as space permits.

NO COPYRIGHTED ARTICLES may be submitted without express permission of the author and publisher. Articles should be submitted by the 1<sup>st</sup> Wednesday to be

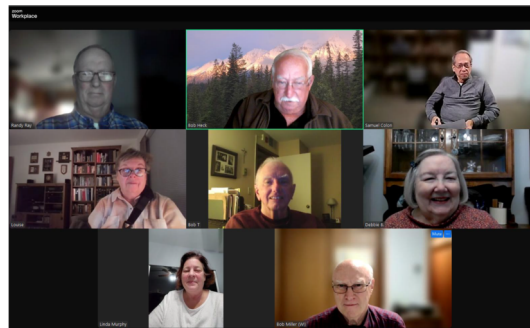
considered for inclusion in that same month. Credit will be given for your article.

## **STEERING COMMITTEE MEMBERS**

<b>Bob Heck</b>	<b>Jane Orne</b>	<b>Randy Ray</b>
<b>Bob Miller</b>	<b>John Canapa</b>	<b>Sam Colon</b>
<b>Bob</b>		<b>Steve</b>
<b>Tatalovich</b>	<b>Linda Murphy</b>	<b>Gulgowski</b>
		<b>Merilyn</b>
<b>Debbie Bluett</b>	<b>Louise Stack</b>	<b>Romani</b>

Steering committee meetings are held via Zoom on the third Wednesday of the month except in December. The Steering Committee is an informal group of members who get together to plan topics for future meetings.

**All MPAFUG members are welcome to attend.**



Questions about MPAFUG?

***If you would like to make a presentation or have a suggestion for a meeting topic***

Write, call or email:

MPAFUG c/o Bob Heck

4910 Steeple Dr.

Greendale, WI 53129

414-421-7143

[bobheckmpafug@gmail.com](mailto:bobheckmpafug@gmail.com)

### **OUR WEB PAGE**

<http://mpafug.org>

**We invite you to visit our page, print a copy of this or last month's newsletter. You'll find a surname section where you can see who else is working on your family line.**

**Members of MPAFUG have access to a members-only web page which contains past newsletters and handouts from our meetings.**