

NEWSLETTER

FEBRUARY 2026
 VOLUME 2026 ISSUE 2

INSIDE THIS ISSUE

NEXT MEETING INFORMATION

LAST MEETING RECAP

MUSINGS

MEMBERSHIP INFORMATION

RESOURCE INFORMATION

ABOUT THIS NEWSLETTER

STEERING COMMITTEE MEMBERS

Next meeting:
WEDNESDAY
FEBRUARY 11TH 2026



Set Alarm for 6:40 PM

6:40 PM – NEW BERLIN LIBRARY*

15105 West Library Lane
New Berlin ~ WI 53151



FEBRUARY PRESENTATIONS

• **MATRICULA GREATLY EXPANDED** **By Bob Heck** (40 minutes)

- Bob will tour what's new at Matricula, highlighting recently added church books and registers.
- Matricula Online keeps growing, with an expanding collection of digitized Catholic records from across Europe.
- Watch research come to life as we explore this free site and compare today's crisp digital images to old 35mm microfilm.
- Explore newly added baptism, marriage, and death records from dioceses in Austria, Germany, Slovenia, Poland, Serbia, Bosnia and Herzegovina, Luxembourg, and Italy (South Tyrol).
- Access priceless historical records with ease through this innovative, cross-border, interdenominational portal.

• **ARCHION-ACCESSING GERMAN PROTESTANT CHURCH RECORDS** **By Randy Ray** (40 minutes)

- Take a guided dive into Archion, the treasure chest of German Protestant church records
- Learn sneaky-smart tips to find what you need without getting lost
- Make peace with German genealogical terms and column headings
- Decode old German handwriting that looks impossible (but isn't!)
- Perfect for anyone with German ancestors—and a sense of curiosity

JANUARY MEETING RECAP

CYBER SECURITY REFRESHER

By Bill Heck

- Our first talk in our new home was great with our annual security refresh by Bill.
- Some topics highlighted include:
 - How to identify SCAMS
 - Texting SCAMS
 - Password security tips
 - Make them complex
 - Change them often
 - Password management sites
 - MFA - strength of multi-factor authentication
 - AI – Artificial intelligence and the well-tuned-in voice cloning scams
 - Delivery notice scams
- He reminded us of some important 2026 new-year's resolutions to be mindful of:
 - Be cautious with unsolicited emails and messages
 - NEVER send money to strangers
 - Research sellers before making online purchases
 - THINK before clicking links or opening attachments
 - Use strong, unique passwords
 - Enable MFA where possible
 - Regularly review your bank and credit card transactions for accuracy
 - Utilize privacy settings on social media
 - Stay informed about new scam techniques
- Most important when questioning legitimacy of phone call or email, is to STOP and go DIRECT to the source for verification.
- Fantastic job again Bill – truly priceless!



WINDOWS 10 SUPPORT ENDS – WHAT ARE MY OPTIONS

By Sam Colon

- Sam gave our second talk of the night and it was so timely!
- Windows 10 ended support 10.14.2025, but you can still use it with some precautions and adjustments in mind.
- It will continue to operate, your programs will still work, and your data will still be there.
- Sam laid out the changes in terms of “lanes of traffic needed to navigate busy info highway”. Going from 16bit to 32bit to now 64bit to handle the level of heavy information.
- What will change is the security updates, patches and improvements will no longer happen. That means you should install supplemental security measures to keep your information safe and secure. Here are some options:
 - Security software (see Sam’s handouts for specifics)
 - ✓ Recommend the advanced options
 - Can purchase extended support updates (ESU) to cover until 10.14.26
 - Upgrade to Windows 11 (refer to handout for options based on the age of your computer)
- Additional reminders from Sam:
 - Make sure your security software is set to do automatic scans (nightly or on your off times daily)
 - Use a quality security software and maintain your security software through continuous upgrades.
 - **DO NOT SKIMP ON SECURITY!!!**
- Wonderful way of explaining the how-and-why Sam. Great job and thank you!

MUSINGS & MUTTERINGS:

February brings us from winter wonderland to being within a dream's reach of spring. We have braved a cold spell for the record books lately and it makes me wonder about our ancestors and why they chose to stay here and not a more accommodating climate.

I started to ponder what it was like 100 years ago (BTW-I do this often) and found some post worthy events that occurred in 1926 per the History Channel. Let's re-discover what happened in that year with some of the major events, anniversaries, famous births and notable deaths.

1926: Putting Your Ancestors in Context

Life in 1926: Everyday Experiences

- ♥ Radio became a household staple, changing how families receive news and entertainment.
- ♥ Automobiles and improved roads increased mobility, especially for rural families.
- ♥ The five-day workweek began reshaping daily routines and leisure time.
- ♥ Prohibition continued to influence work, court cases, and law enforcement records.
- ♥ Immigration slowed, but internal migration increased as Americans moved for jobs and opportunity.

United States Snapshot

- ♥ U.S. Route 66 was officially established, opening new travel and employment opportunities.
- ♥ NBC launched the first national radio network, shaping culture and communication.
- ♥ Labor movements expanded, leaving behind union membership and employment records.
- ♥ Baseball flourished as America's pastime, reflecting a growing culture of leisure and mass entertainment.
- ♥ Bonnie & Clyde gave G-men a run



Science, Technology & Record Creation

- ♥ Television was successfully demonstrated for the first time, signaling rapid technological change.
- ♥ The first liquid-fueled rocket was launched, laying groundwork for future scientific breakthroughs.
- ♥ Sound-on-film technology transformed the movie industry and created new types of employment.
- ♥ The SAT was introduced, reflecting the rise of standardized education records.

World Events Affecting Family History

- ♥ Germany joined the League of Nations, marking post-World War I stabilization.
- ♥ The General Strike in Great Britain disrupted transportation, employment, and recordkeeping.
- ♥ Political shifts in China and Japan influenced emigration and overseas records.
- ♥ Fascism strengthened in parts of Europe, foreshadowing displacement that would later affect millions of families.

Culture & Community

- ♥ The Harlem Renaissance continued to shape music, literature, and African American history.
- ♥ Art Deco influenced architecture and design still visible in historic neighborhoods.
- ♥ *Winnie-the-Pooh* was published, reflecting the era's family-centered culture and values.

Notable Births

Marilyn Monroe • Chuck Barry • Fidel Castro • Miles Davis • Elizabeth II • David Attenborough • Leslie Nielsen • Andy Griffith • Mel Brooks

Notable Deaths

Harry Houdini • Rudolph Valentino • Claude Monet • Annie Oakley • Sergeant Stubby

Genealogy Tip

If your ancestor lived in 1926, look beyond the census. City directories, newspapers, union files, court records, passenger lists, and employment records can add rich details to their story during this rapidly changing year.

JANUARY meeting attendance

42 ...

**WE WOULD LOVE TO SEE YOU IN
FEBRUARY – BRING A FRIEND!**

MEMBERSHIP UPDATE

***Membership in MPAFUG is open to anyone
interested in learning more about computer
genealogy.***

\$12 – the cost per calendar year membership that
covers individual and family

***RENEW NOW FOR 2026 SO YOU DON'T MISS
ANY MEMBER-ONLY BENEFITS ☺***

**Please send a check for \$12.00 made payable to
MPAFUG or bring to the next meeting:**

Include: name, address, email & phone number.

**Deborah A. Bluett
MPAFUG Treasurer
PO Box 229
Delavan, WI 53115-0229**

About This Newsletter

This newsletter is the official monthly publication
of the Milwaukee PAF Users Group. All rights are
reserved. No articles herein may be reproduced for
profit or commercial gain without the express written
consent of the Publisher or the Milwaukee PAF Users
Group. Other PAF Users Groups may republish articles
freely but must include credit to the authors and for the
Milwaukee PAF Users Group Newsletter.

Members interested in submitting articles may email
them to bobheckmpafug@gmail.com. The MPAFUG
publisher will determine if an article will be used in this
newsletter. Articles will be used as space permits.

NO COPYRIGHTED ARTICLES may be submitted
without express permission of the author and publisher.
Articles should be submitted by the 1st Wednesday to be
considered for inclusion in that same month. Credit will
be given for your article.

RESOURCES

The Family Search Center

9600 West Grange Avenue, Hales Corners

The Family Search Center Library hours:

Tuesday: 8:30AM – 3:30PM

Wednesday: 8:30AM – 12 Noon

Thursday: 8:30AM – 3:30PM and
6:30PM – 9:00PM

Saturday: 10:00AM – 1:00PM

Enter at the main doors facing West Grange
Avenue and follow the signs to the library.

On Thursday evenings, Bob Heck and Randy Ray
are the volunteers on duty who will assist you in
your research.

For some extra special help from May through
September, Cheryl Heck is there to help you.
Cheryl is LDS Mormon and is the expert in the
Family Search website and LDS issues.

There are numerous portal systems available for
free use at the center.

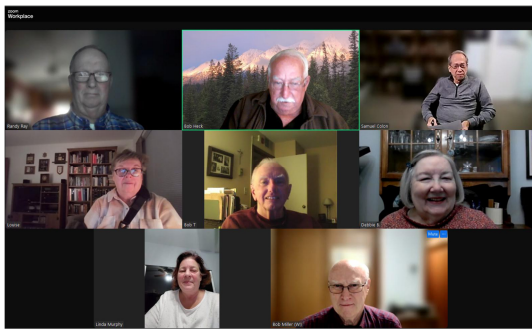
Come enjoy this resource!

MPAFUG KEY INFORMATION

STEERING COMMITTEE MEMBERS

Bob Heck	Jane Orne	Randy Ray
Bob Miller	John Canapa	Sam Colon
Bob		Steve
Tatalovich	Linda Murphy	Gulgowski
	Merilyn	
Debbie Bluett	Romani	

Steering committee meetings are held via Zoom on
the third Wednesday of the month except in
December. The Steering Committee is an informal
group of members who get together to plan topics
for future meetings.



**If you would like to make a presentation or have
a suggestion for a meeting topic**

Write, call or email:
MPAFUG c/o Bob Heck
4910 Steeple Dr. .
Greendale, WI 53129
414-421-7143
bobheckmpafug@gmail.com

OUR WEB PAGE

<http://mpafug.org>

We invite you to visit our page, print a copy of this or last month's newsletter. You'll find a surname section where you can see who else is working on your family line.

Members of MPAFUG have access to a members-only web page which contains past newsletters and handouts from our meetings.

***The New Berlin Public Library does not advocate for or endorse the viewpoints of meetings or meeting room users.**