

## INSIDE THIS ISSUE

NEXT MEETING INFORMATION

LAST MEETING RECAP

MUSINGS

MEMBERSHIP INFORMATION

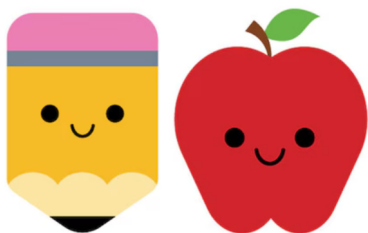
RESOURCE INFORMATION

ABOUT THIS NEWSLETTER

STEERING COMMITTEE MEMBERS

**Next meeting:**  
**WEDNESDAY**  
**SEPTEMBER 10<sup>TH</sup> 2025**

**7:00 PM – New Berlin Ale House**  
**16000 West Cleveland Avenue**  
**New Berlin, WI 52151**



## IT'S BACK TO SCHOOL TIME!

*Come enjoy the next meeting to hear new topics and  
 also a healthy review of prior lessons.*

*Bring your best friend to take on this classroom  
 journey.*



## SEPTEMBER PRESENTATIONS

### • **ADOPTION IN THE TREE**

**By Linda Murphy**

- Adoption is one of the most special, private and sensitive subjects in many circumstances.
- Not everyone wants to make connections or be found. Being respectful of everyone involved.
- I will be covering some of the currently available resources to help if you or someone in your family wants to pursue locating adoption records.
- Does it need special documentation notes or to be noted at all in a family tree?

### • **DISCOVERY AT MPAFUG ~**

**Presentations & handouts**


**By Bob Miller**

- Bob is going to take us down memory lane on a very cool recap of the evolution of MPAFUG
- Covering highlights for tools and information from the beginning. Helping members navigate the genealogy side of their computer.
- Reviewing things that may still be relevant and have gone through vast improvements.
- You may hear names from past members and presentation topics that have propelled everything in MPAFUG to what it is today.
- Bring a friend, sit back and enjoy the trip.

## AUGUST MEETING RECAPS

### • **SOCIAL SECURITY, STEPHEN MORSE AND GENEALOGY**

**By Bob Tatalovich**

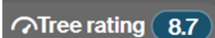
- Bob shared a number of sources that are publicly accessible and the various changes they have gone through over the years.
- The Numident, specifically, often references family connections for tree expansion.
- Morse's aide and methodology shared but in 2011 they stopped Morse's method of birth location and it now uses randomization.
- You can be "resurrected" if you get reported as dead and falsely re-moved.
- 37 million numbers issued in the first 2 years.
- Medicare brought on rules to prove age and identity for benefits.
- Progressed to enumeration at birth.
- Currently 450 million issued to date
- Latest challenges come in high levels of fraud, will lead the agency towards even more regulation.
- Centenarians live on! Longevity trending up as more and more people are living longer and drawing checks longer.
- Lots of fantastic information – great job Bob and thank you!

### • **NEW STUFF ON ANCESTRY & IN WINDOWS FOR THE GENEALOGIST**

**By Randy Ray**

- Randy covered "what you didn't know" for some lesser-known features on Ancestry.com and some other genealogy tools.

- Tree-checker:



- This tool looks for inconsistencies in your family tree such as missing critical dates, illogical relationships and duplicate entries.
  - Score around 5 is average, above 8 is a clean tree per google and Randy.
  - You do need the Ancestry Pro Tools subscription for this.
- New photo features on Ancestry too
  - Pick person in your gallery view, choose picture, click sharpen, colorize and more.
- Labs Experiment in FS revealed a plethora of information upon name search. Some look-ups may be locked but can be only viewed at FS Library.
- Use Chat GPT to translate documents! Amazing results toot-sweet.
- He covered tips and tricks for more photo editing – removing objects.
- You can set up alerts on Newspapers. When something with your alert information gets scanned in, they will send the information to your email. Very handy!
- Utilize City Directories. Helps especially in large metro areas for all relatives in close areas.
- Cemeteries! Know 'em – love 'em.
  - Email ahead of a visit for a burial card.
  - LOTS of information available and 95% of cemeteries have them.
- Randy has been to an impressive 208 so far making him a super-taphophile!
- YouTube videos. Many videos available if you find a city or village in your tree and want to see what it looked like when your ancestor was there. Current YouTubers post relaxing walking tours. Fun!
- Lots of info packed into a very interesting hour – super stuff Randy – thank you!

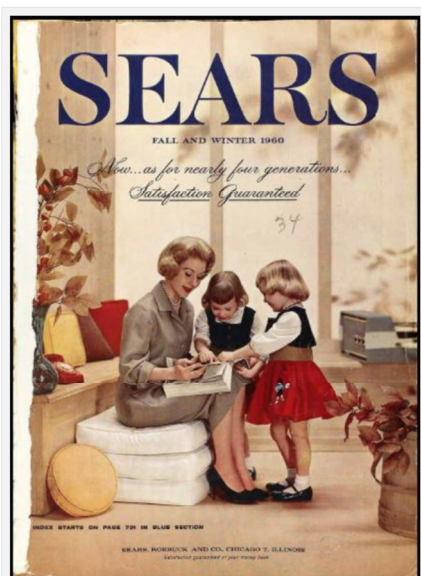
## MUSINGS & MUTTERINGS:

September is the turning point for many things.

- Summer ends, autumn begins, leaves fall, pumpkins ripen, cider with cinnamon warms your palette.
- What are your favorite fall traditions?
- Memories of back to school shopping and how much things have changed.
- 1800's - writing slates and chalk for practice, quills and dip pens with ink and paper, and a few McGuffey Readers or other books for lessons. Students also used pen knives to sharpen quills and carried their lunches in tin pails.
- 1950 – you needed satchel, small box of pencils, pencil box or bag, small box of crayons, scissors, glue, eraser, notebook, ruler, folder.
- 1980 – all from 1950 but in multiples for notebooks, folders and paper. Add Trapper Keeper and Kleenex!
- 2025 – Chrome notebook, headphones and a phone.

My how things have changed!

Shortly after getting back in the swing of Fall, thoughts would turn to waiting for this in the mail to start your wish list.



Sears Catalog Fall 1960, Cover. Digital image from Ancestry.com.

Historic Catalogs of Sears, Roebuck and Co., 1896-1993

[database on-line]. Provo, UT, USA: Ancestry.com Operations,

Inc., 2010.

Original data: Sears Roebuck Catalogs 1896-1993. Vol.102-228

K. Chicago, Illinois: Sears, Roebuck and Co.

## AUGUST meeting attendance

32

### LET'S TALK MPAFUG! 2026

We have a great lineup for the remaining meetings for 2025 including our annual Show and Tell in October.

WHAT'S NEXT?

i  
Steering Committee is already busy planning meeting topics for 2026 and would like your help.

**This group is your group.**



- What do you want to hear about?
- Would you be interested in:
  - Guest speakers?
  - Demonstrations?
  - Workshops?
- What research do you want to know more about?
- Q&A sessions with Bob and Randy?
- Specific ethnicities information challenges and tools to use?
- Are there suggestions on your mind that we should incorporate?
- Keeping the hunger for heritage alive is challenging. Would you like to be a speaker?
- What can you do to bring the next generation into your research journey?
- Attendance at our meetings pre-covid were 100+ routinely. We are looking to grow our attendance again as we now average 30.

- What would you like to see to help raise attendance?
- Bring a friend, neighbor, relative, spouse, co-worker. It's fun stuff!

***WE WOULD LOVE TO SEE YOU!***

### **MEMBERSHIP UPDATE**

***Membership in MPAFUG is open to anyone interested in learning more about computer genealogy.***

**203**— the number of families currently enrolled memberships.

**\$12** – the cost per calendar year membership that covers individual and family

**Please send a check for \$12.00 made payable to MPAFUG or bring to the next meeting:**

**Include: name, address, email & phone number.**

**Deborah A. Bluett  
MPAFUG Treasurer  
PO Box 229  
Delavan, WI 53115-0229**

### **RESOURCES**

#### ***The Family Search Center***

9600 West Grange Avenue, Hales Corners  
The Family Search Center Library hours:

**Tuesday:** 8:30AM – 3:30PM  
**Wednesday:** 8:30AM – 12 Noon  
**Thursday:** 8:30AM – 3:30PM and  
6:30PM – 9:00PM  
**Saturday:** 10:00AM – 1:00PM

Enter at the main doors facing West Grange Avenue and follow the signs to the library.

On Thursday evenings, Bob Heck and Randy Ray are the volunteers on duty who will assist you in your research.

For some extra special help from May through September, Cheryl Heck is there to help you. Cheryl is LDS Mormon and is the expert in the Family Search website and LDS issues.

There are numerous portal systems available for free use at the center.

**Come enjoy this resource!**

### **MPAFUG KEY INFORMATION**

### **About This Newsletter**

This newsletter is the official monthly publication of the Milwaukee PAF Users Group. All rights are reserved. No articles herein may be reproduced for profit or commercial gain without the express written consent of the Publisher or the Milwaukee PAF Users Group. Other PAF Users Groups may republish articles freely but must include credit to the authors and for the Milwaukee PAF Users Group Newsletter.

Members interested in submitting articles may email them to [bobheckmpafug@gmail.com](mailto:bobheckmpafug@gmail.com). The MPAFUG publisher will determine if an article will be used in this newsletter. Articles will be used as space permits.

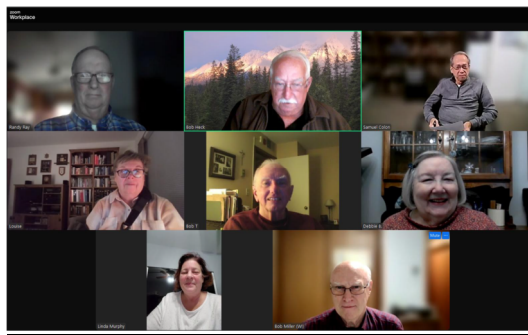
NO COPYRIGHTED ARTICLES may be submitted without express permission of the author and publisher. Articles should be submitted by the 1<sup>st</sup> Wednesday to be considered for inclusion in that same month. Credit will be given for your article.

### **STEERING COMMITTEE MEMBERS**

<b>Bob Heck</b>	<b>Jane Orne</b>	<b>Randy Ray</b>
<b>Bob Miller</b>	<b>John Canapa</b>	<b>Sam Colon</b>
<b>Bob</b>		<b>Steve</b>
<b>Tatalovich</b>	<b>Linda Murphy</b>	<b>Gulgowski</b>
		<b>Merilyn</b>
<b>Debbie Bluett</b>	<b>Louise Stack</b>	<b>Romani</b>

Steering committee meetings are held via Zoom on the third Wednesday of the month except in December. The Steering Committee is an informal group of members who get together to plan topics for future meetings.

**All MPAFUG members are welcome to attend.**



**If you would like to make a presentation or have a suggestion for a meeting topic**

Write, call or email:

MPAFUG c/o Bob Heck

4910 Steeple Dr.

Greendale, WI 53129

414-421-7143

[bobheckmpafug@gmail.com](mailto:bobheckmpafug@gmail.com)

**OUR WEB PAGE**  
**<http://mpafug.org>**

We invite you to visit our page, print a copy of this or last month's newsletter. You'll find a surname section where you can see who else is working on your family line.

**Members** of MPAFUG have access to a members-only web page which contains past newsletters and handouts from our meetings.